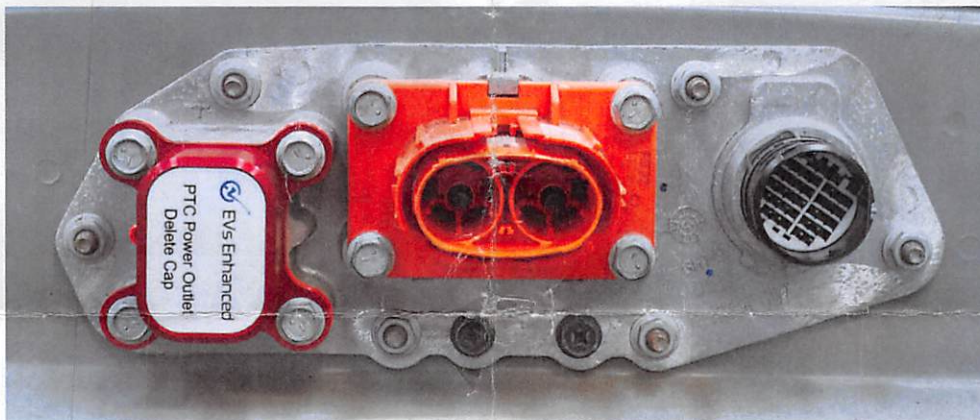


Nissan Leaf Positive Temperature Coefficient (PTC) Power Outlet Delete Cap Fitting Instructions



Kit Contents:

- 1 x PTC blanking connector
- 1 x Anodised aluminium protection cap

Tools required:

- 1 x M10 socket with wrench

Thank you for choosing to support EVs Enhanced by purchasing this PTC Power Outlet Delete Cap. This product is designed for use when installing later model Nissan battery packs built from 2013 onward into an original 2011-2012 (ZE0) model Leaf. This power outlet is not utilised by the ZE0 Leaf and so this delete cap must be fitted to ensure correct operation of the replacement battery pack.

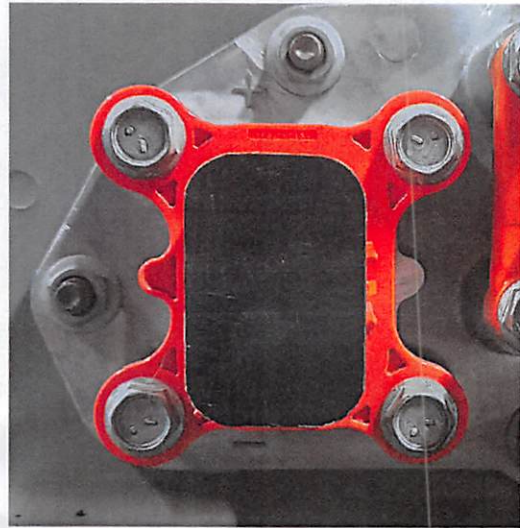
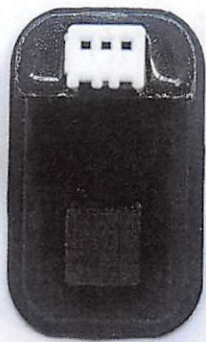
Note:

The PTC Power Outlet Delete Cap can be installed before fitting the battery pack to the vehicle.

Important Safety Message:

Electric Vehicles use high voltage which is potentially dangerous. Ensure that all appropriate safety equipment is used and safety precautions are followed when operating around high voltage.

1. Fit the Supplied PTC Blanking Connector to the PTC power outlet of the battery pack.
Align the white connector with the top of the PTC power outlet and insert until the connector sits flush with the power outlet



2. Using the M10 socket and wrench, remove the four bolts surrounding the PTC power outlet and set them aside as they will be reused.

3. Fit the PTC Power Outlet Delete Cap over the power outlet as per the image below. Fasten in place using the bolts removed in step one ensuring seal is tight.

